



IDAHOANS

FOR HEALTHCARE



62,000 IDAHOANS

ARE CAUGHT IN THE HEALTH COVERAGE GAP



FARMERS & RANCH-HANDS

WORKING MOMS

VETERANS

NEAR RETIREES



Who is in the gap?



Donna

- Outdoor enthusiast
- Behavioral Therapist
- Stopped working due to recurrent health issues
- Unable to get diagnosis without coverage
- Has to wait 2 years for traditional Medicaid health coverage

Who is in the gap?



Courtney

- 4th year medical student
- Too old for parents' insurance coverage
- Lives with asthma and other chronic conditions
- Goes without treatment

Working Idahoans Are in the Gap

Top 10 Occupations of Idahoans in the Gap

- Restaurant & other food services
- Construction
- Child day care services
- Animal production
- Landscaping services
- Hotels / motels
- Crop production
- Business support services (call & service centers)
- Entertainment & recreation
- Personal care support

Previous Efforts 2013-2018

- **Primary Care Access Plan – PCAP (2016)**
- **Healthy Idaho Plan (2017)**
- **Idaho Health Care Plan - Dual waivers (2018)**

Ballot Initiative Process

The background of the slide is a photograph of the Michigan State Capitol building, a large neoclassical structure with a prominent dome. The image is overlaid with a semi-transparent green filter. In the foreground, a crowd of people is gathered on the steps of the building. To the left, a dark-colored van is parked, with the text "VOTE YES FOR MEDICAID." visible on its side.

1. Signature gathering

- Required: 56,192
- Collected: 74,974

2. Election

- November 6th

3. Implementation

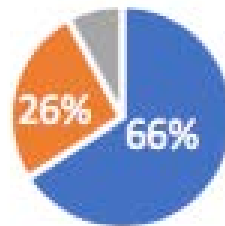
Proposition 2 ballot language

- Shall sections of the Idaho Code be amended, and new sections added, so that the state shall expand Medicaid eligibility to adults under age 65 with incomes below 138% of the federal poverty line?



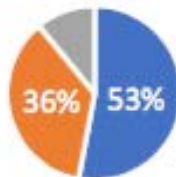
Polling

Likely Idaho Voters



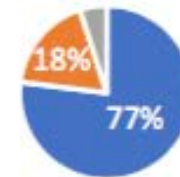
■ Support ■ Oppose ■ Don't Know

Republican Voters



■ Support ■ Opposed ■ Don't Know

Independent Voters



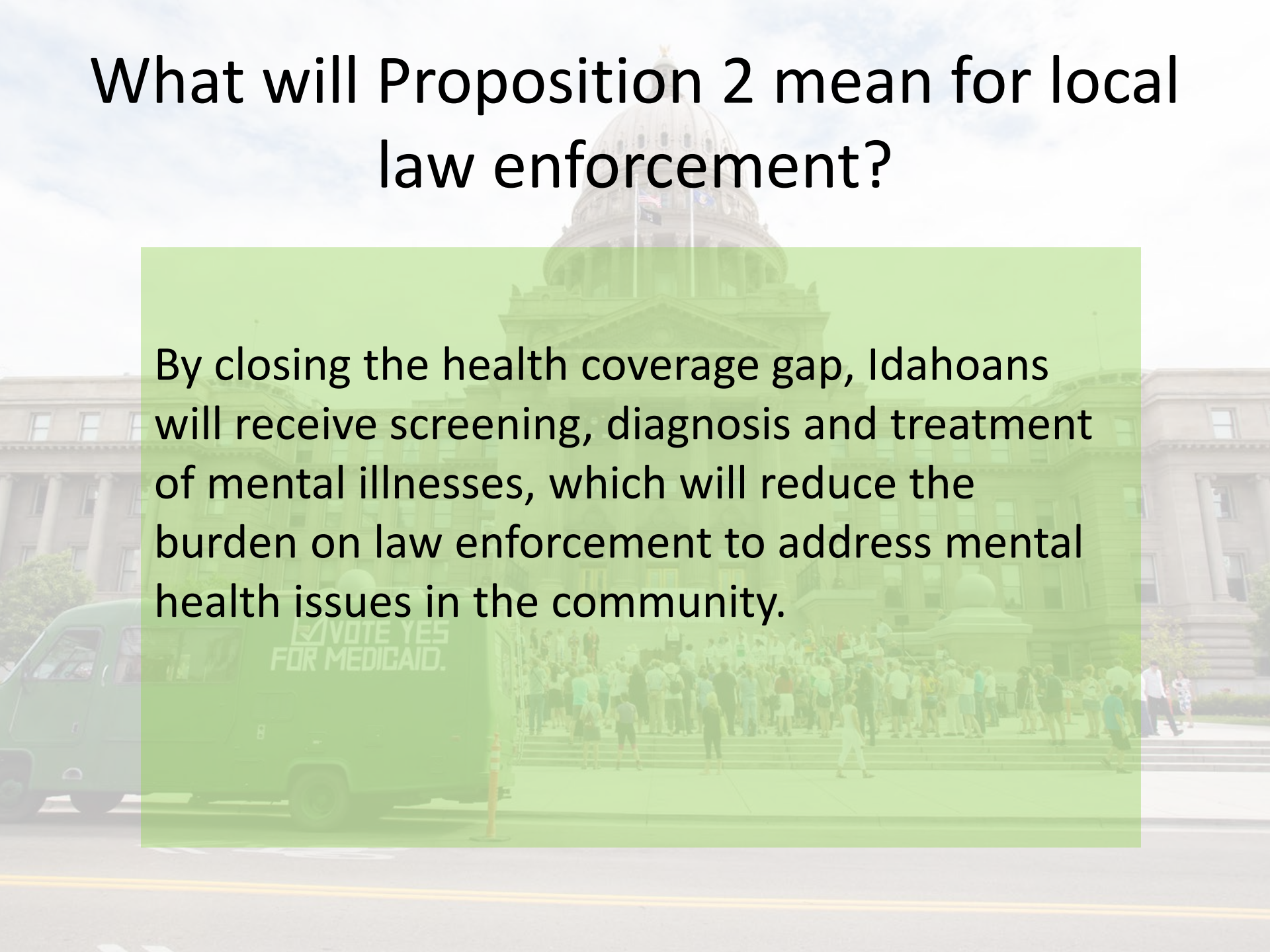
■ Support ■ Opposed ■ Don't Know

What will Proposition 2 do?

- Provide healthcare coverage to people earning less than \$17,000/year
- Bring nearly \$400 million of taxpayer money back to Idaho.
- Save taxpayer money through cost reductions in state and county programs

What will Proposition 2 mean for local law enforcement?

By closing the health coverage gap, Idahoans will receive screening, diagnosis and treatment of mental illnesses, which will reduce the burden on law enforcement to address mental health issues in the community.



What will Proposition 2 mean for local law enforcement?

- 42% of Catastrophic/Indigent program claimants in Idaho received mental health treatment. One in four Idahoans suffer from some form of mental illness, and over half do not get any treatment.
- There are more people with mental illness in county jails than in psychiatric hospitals. Closing the coverage gap will give Idahoans the treatment they need to prevent them from going to county or city jails and present future mental health crises.
- Since 2016, the number of drug-induced deaths in Idaho caused by opioids has increased by 69%. In Medicaid expansion states, the uninsured rate for opiate-related hospitalizations has plummeted by 79%.

What will Proposition 2 mean for local law enforcement?

“Medicaid also helps prevent crime, as areas with Medicaid expansion were found to experience a reduction in crime rates and an increase in the number of people receiving treatment for substance abuse.”

– Council for a Strong America

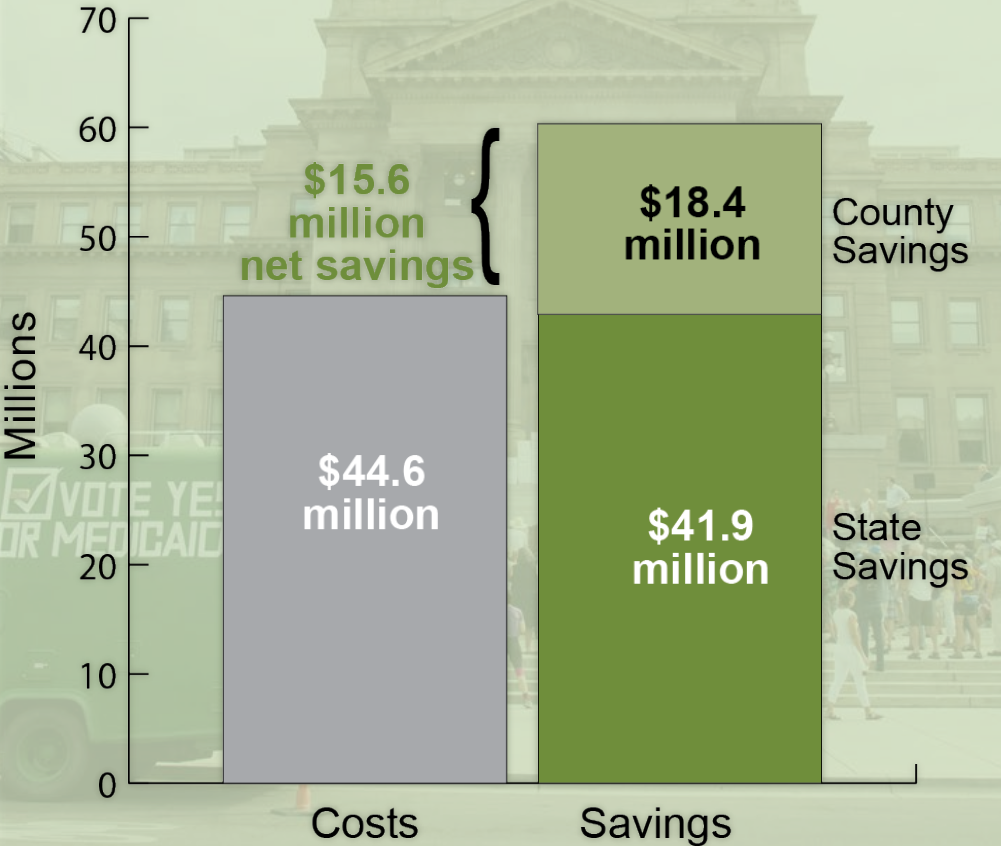
Local impact

- Help keep rural hospitals open
- Create 5,000 jobs
- Healthier workforce
- Boost to local economy



Save taxpayers money

Fiscal Impact in Year Three of Medicaid Expansion, with Elimination of Indigent and Catastrophic Care Programs



Idaho Center for Fiscal Policy analysis of Milliman July 2018 Report

Provide care to more people

- Current program pays for between 4,000 and 5,000 cases per year
- Medicaid expansion could provide healthcare coverage for over 91,000 people at lower cost

Endorsers

Ada County Medical Society
American Heart Association
American Lung Association
Boise Metro Chamber
Comprehensive Cancer Alliance for Idaho
Consortium for Idahoans with Disabilities
DisAbility Rights Idaho
Empower Idaho
Idaho Academy of Family Physicians
Idaho American Cancer Society Cancer
Action Network
Idaho Association of Commerce & Industry
Idaho Behavioral Health Alliance
Idaho Chapter, American Academy of
Pediatrics
Idaho College of Emergency Physicians
Idaho Doctors and Nurses for Healthcare
Idaho Health Continuum of Care Alliance
Idaho Hospital Association

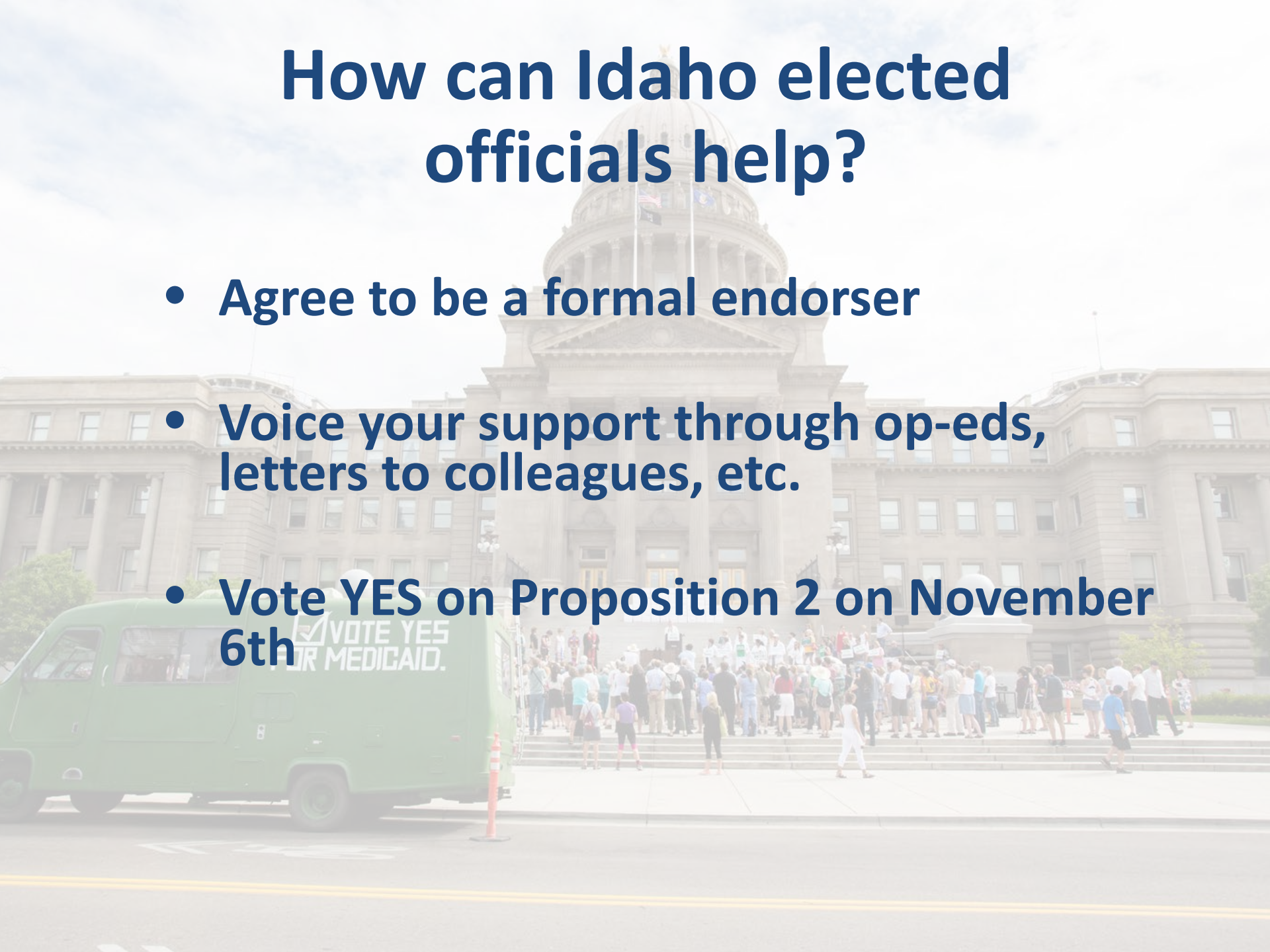
Idaho Medical Association
Idaho Leukemia and Lymphoma Society
Idaho Moms for a Brighter Future
Idaho Primary Care Association
Idaho Suicide Prevention Hotline
Idaho Voices for Children
National Association of Social Workers
Pocatello-Chubbuck Chamber of Commerce
Primary Health Medical Group
Reclaim Idaho
United Way of Treasure Valley
Vituity Emergency Physicians

Legislative Endorsers

- Senator Keough
- Senator Martin
- Representative Gibbs
- Representative Malek
- Representative McDonald
- Representative Wood
- Representative Perry (co-chair of Idahoans for Healthcare)

How can Idaho elected officials help?

- Agree to be a formal endorser
- Voice your support through op-eds, letters to colleagues, etc.
- Vote YES on Proposition 2 on November 6th



Contact Information

The background of the slide is a photograph of the Idaho State Capitol building. The building is a large, classical-style structure with a prominent central dome. In the foreground, a green van is parked on the left side of the frame. The van has the text "FOR MEDICARE" visible on its side. A large group of people is gathered on the steps and plaza in front of the building. The sky is bright and slightly overcast.

Jefferson Kemper, Campaign Manager

Jefferson@IdahoansforHealthcare.org

www.idahoansforhealthcare.org